

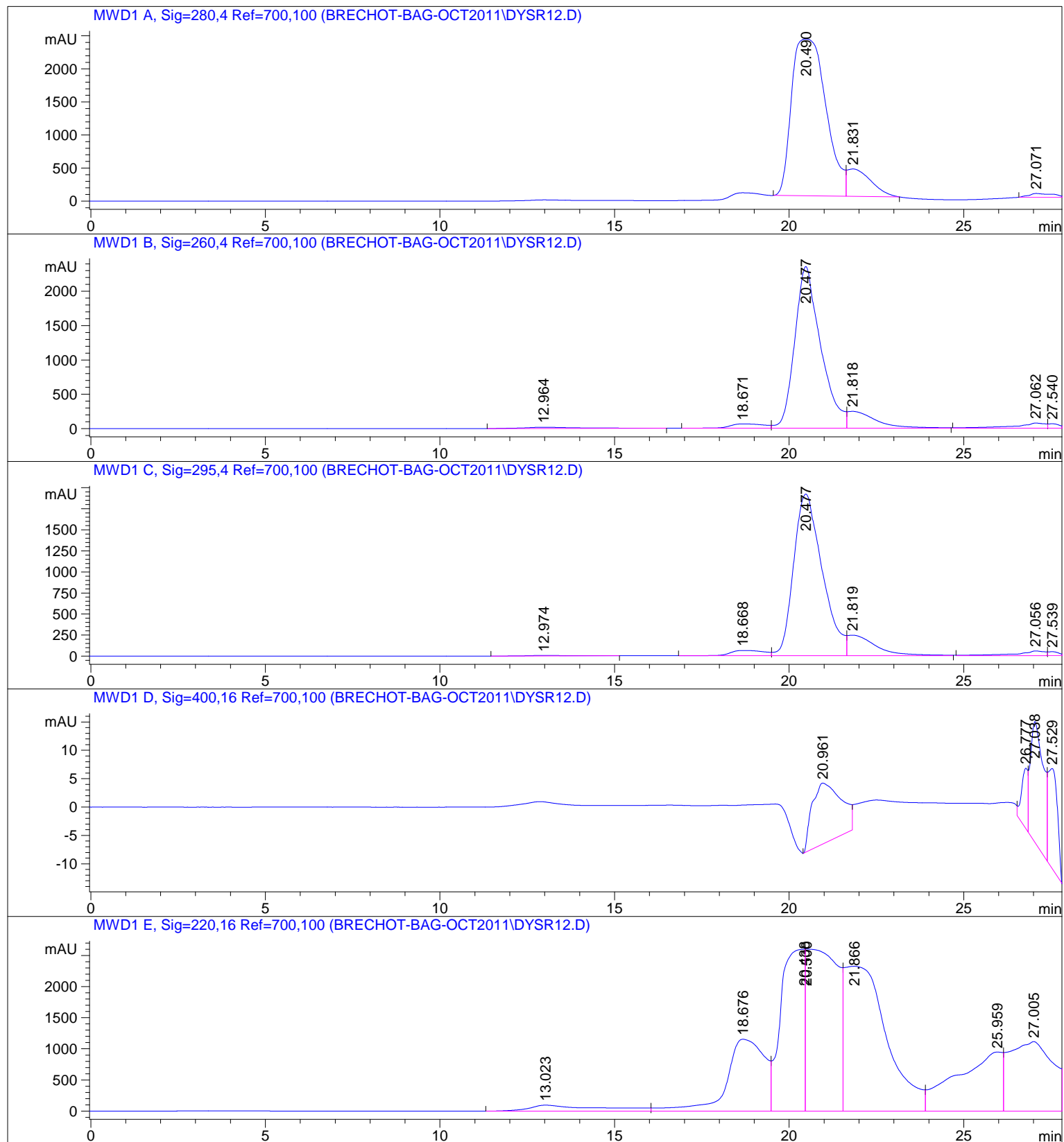
=====

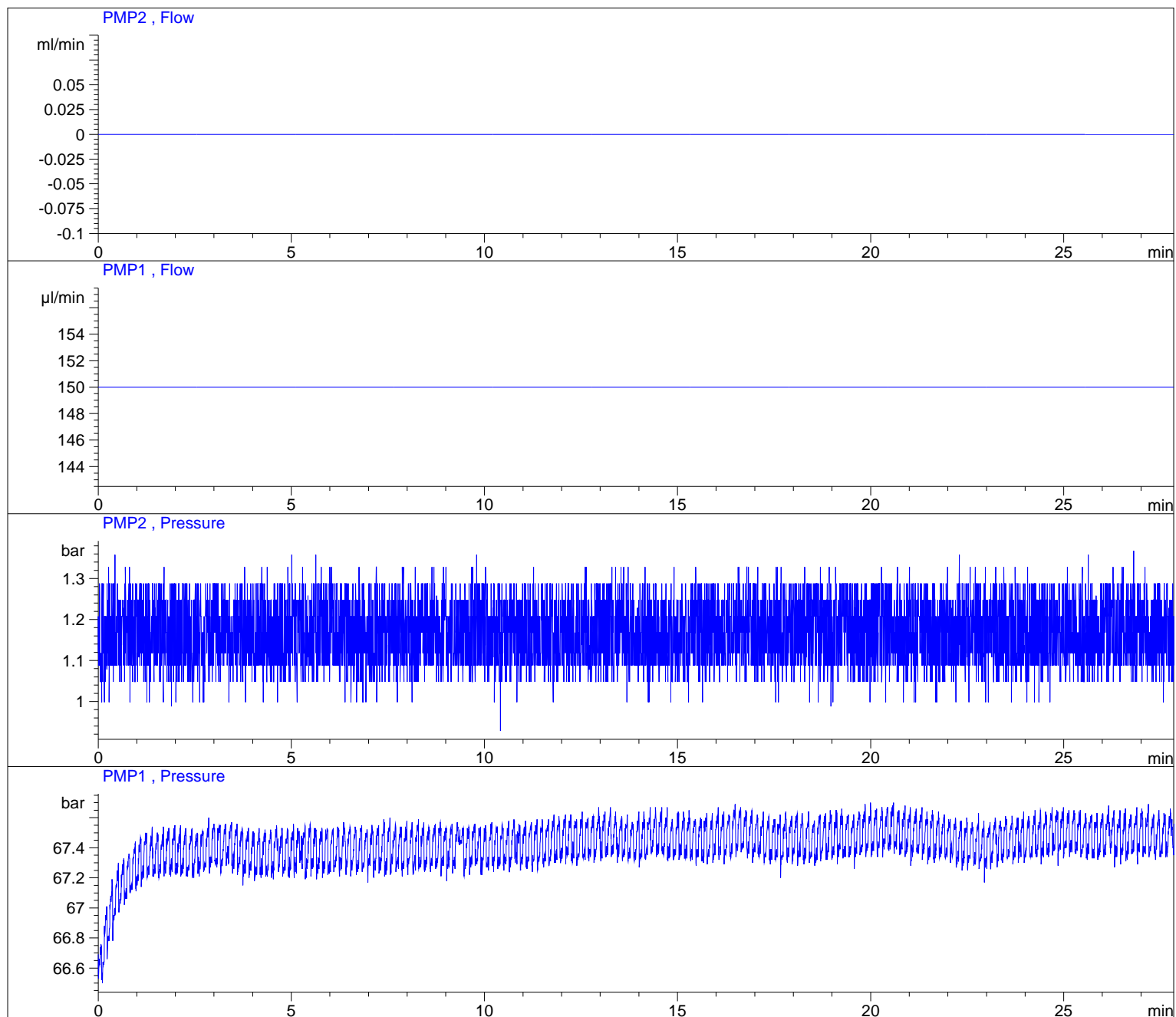
Acq. Operator : DysR12
Acq. Instrument : Instrument 1 Location : Pl-E-02
Injection Date : 10/7/2011 5:04:57 PM Inj Volume : 40.0 µl

Acq. Method : D:\AGILENT\METHODS\USERS\HPLC_BASIC.M
Last changed : 10/7/2011 4:57:35 PM by DysR12
(modified after loading)

Analysis Method : D:\AGILENT\METHODS\USERS\HPLC_BASIC.M
Last changed : 10/7/2011 5:32:43 PM by DysR12
(modified after loading)

Method Info : Auto-sampler mode at 40 µl/min



=====
Area Percent Report
=====

Sorted By : Signal
Multiplier: : 1.0000
Dilution: : 1.0000
Use Multiplier & Dilution Factor with ISTDs

Signal 1: MWD1 A, Sig=280,4 Ref=700,100

Peak #	RetTime [min]	Type	Width [min]	Area [mAU*s]	Height [mAU]	Area %
1	20.490	BV	0.8198	1.62554e5	2371.29053	87.7799
2	21.831	VB	0.7353	1.98488e4	415.50278	10.7185
3	27.071	BBA	0.6302	2780.73462	57.70633	1.5016

Totals : 1.85183e5 2844.49963

Signal 2: MWD1 B, Sig=260,4 Ref=700,100

Peak #	RetTime [min]	Type	Width [min]	Area [mAU*s]	Height [mAU]	Area %
1	12.964	BB	1.4414	2068.16284	18.68424	1.3991
2	18.671	BV	0.9310	4168.08594	61.78723	2.8198
3	20.477	VV	0.7294	1.21715e5	2353.43286	82.3414
4	21.818	VB	0.8576	1.38722e4	244.61404	9.3847
5	27.062	BV	0.7851	4639.92676	75.06613	3.1390
6	27.540	VBA	0.3166	1354.11768	63.55789	0.9161

Totals : 1.47817e5 2817.14240

Signal 3: MWD1 C, Sig=295,4 Ref=700,100

Peak #	RetTime [min]	Type	Width [min]	Area [mAU*s]	Height [mAU]	Area %
1	12.974	BB	0.9307	533.07129	6.95142	0.4013
2	18.668	BV	0.9368	4272.40723	62.87134	3.2163
3	20.477	VV	0.8155	1.09566e5	1920.67871	82.4818
4	21.819	VB	0.8601	1.39754e4	244.76715	10.5207
5	27.056	BV	0.7683	3481.28906	57.67095	2.6207
6	27.539	VBA	0.3187	1008.44476	47.69876	0.7592

Totals : 1.32837e5 2340.63833

Signal 4: MWD1 D, Sig=400,16 Ref=700,100

Peak #	RetTime [min]	Type	Width [min]	Area [mAU*s]	Height [mAU]	Area %
1	20.961	BV	0.7227	607.53491	10.72806	37.4154
2	26.777	BV	0.1847	128.26956	10.63757	7.8996
3	27.038	VV	0.3662	559.10345	21.30044	34.4327
4	27.529	VBA	0.2939	328.84857	17.60309	20.2523

Totals : 1623.75650 60.26916

Signal 5: MWD1 E, Sig=220,16 Ref=700,100

Peak #	RetTime [min]	Type	Width [min]	Area [mAU*s]	Height [mAU]	Area %
1	13.023	BV	1.8236	1.35992e4	95.82955	1.7897
2	18.676	VV	1.1370	8.74486e4	1155.43274	11.5084
3	20.438	VV	0.5488	1.20288e5	2604.74829	15.8302
4	20.500	VV	0.7432	1.62353e5	2604.55566	21.3661
5	21.866	VV	0.9934	1.94674e5	2328.50293	25.6196
6	25.959	VV	1.1648	8.56461e4	949.06940	11.2712
7	27.005	VBA	1.1068	9.58558e4	1117.37415	12.6148

Totals : 7.59865e5 1.08555e4

=====
*** End of Report ***