

Sample Name: dys47 12.8 mg/ml 55 microl

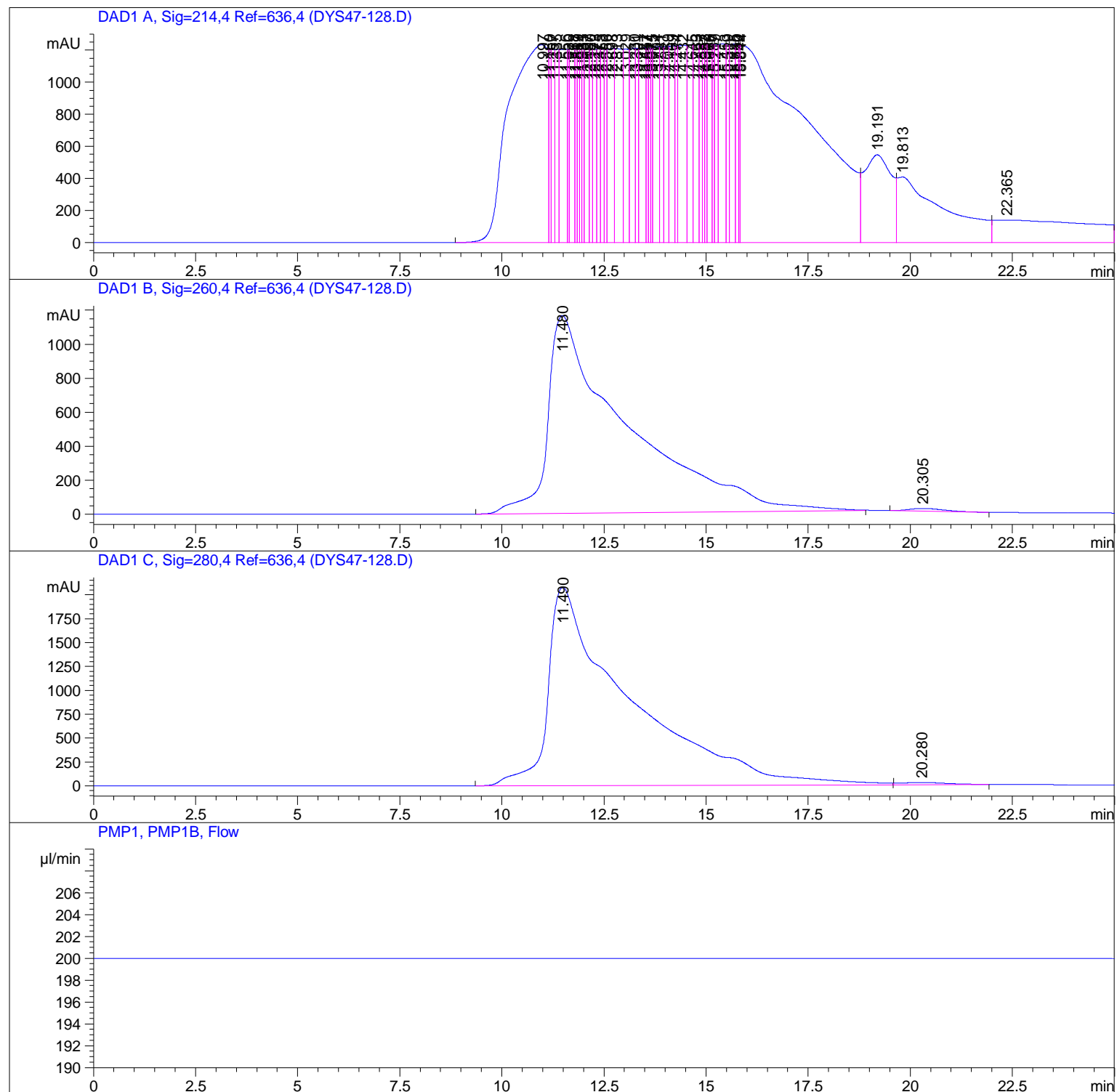
=====

Acq. Operator : Mirjam
Acq. Instrument : Instrument 1 Location : Pl-A-01
Injection Date : 2/5/2014 4:59:47 PM Inj Volume : 55.000 µl

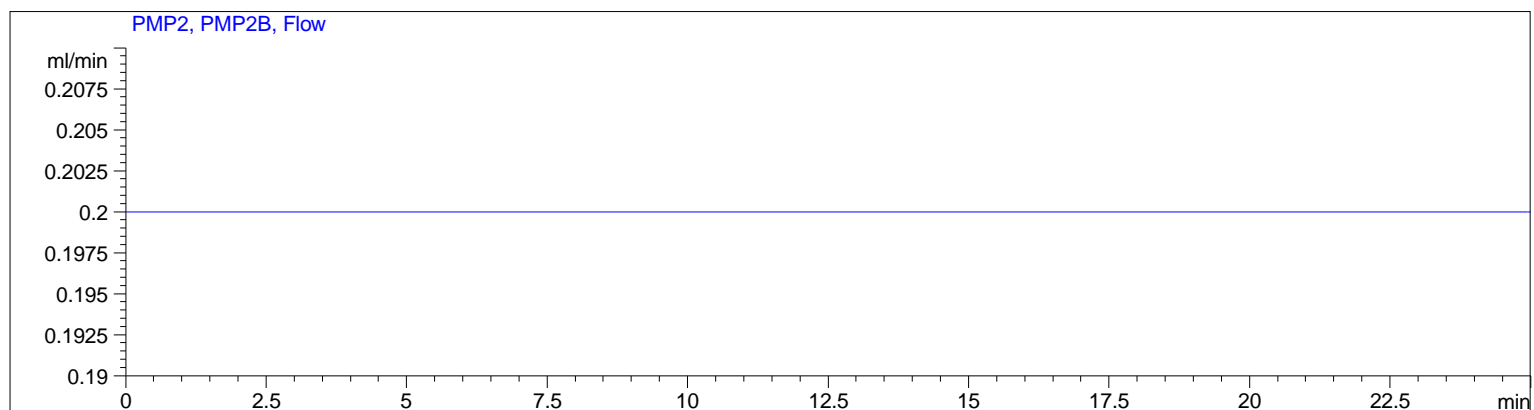
Acq. Method : D:\AGILENT\USERS_METHODS\HPLC_BINCOL.M
Last changed : 2/5/2014 4:56:05 PM by Mirjam
(modified after loading)

Analysis Method : D:\AGILENT\USERS_METHODS\HPLC_BINCOL.M
Last changed : 2/5/2014 5:25:02 PM by Mirjam
(modified after loading)

Method Info : Injection for HPLC Binary column
Equilibration for HPLC Capillary Column



Sample Name: dys47 12.8 mg/ml 55 microl

=====
Area Percent Report
=====

Sorted By : Signal
Multiplier : 1.0000
Dilution : 1.0000
Use Multiplier & Dilution Factor with ISTDs

Signal 1: DAD1 A, Sig=214,4 Ref=636,4

Peak #	RetTime [min]	Type	Width [min]	Area [mAU*s]	Height [mAU]	Area %
1	10.997	BV	0.7625	7.93319e4	1236.49500	12.2756
2	11.160	VV	0.0571	4671.85840	1208.62146	0.7229
3	11.257	VV	0.0699	6194.27246	1206.44348	0.9585
4	11.335	VV	0.0870	7761.14990	1207.00342	1.2009
5	11.556	VV	0.1572	1.50562e4	1209.55383	2.3298
6	11.630	VV	0.0371	3221.74951	1207.16528	0.4985
7	11.758	VV	0.1016	9295.93457	1210.24634	1.4384
8	11.817	VV	0.0508	4236.46240	1210.90417	0.6555
9	11.859	VV	0.0558	4751.19189	1210.63110	0.7352
10	11.931	VV	0.0450	3835.45752	1208.23560	0.5935
11	11.983	VV	0.0485	3982.76172	1208.04138	0.6163
12	12.097	VV	0.0997	9537.24609	1212.82031	1.4758
13	12.160	VV	0.0637	5771.54785	1208.27722	0.8931
14	12.273	VV	0.0884	7302.64502	1209.65002	1.1300
15	12.375	VV	0.0792	6762.06982	1210.81616	1.0463
16	12.453	VV	0.0762	6662.04541	1210.30005	1.0309
17	12.556	VV	0.0547	4826.10645	1206.41663	0.7468
18	12.698	VV	0.1422	1.33536e4	1215.10107	2.0663
19	12.813	VV	0.1603	1.56085e4	1211.78394	2.4152
20	13.029	VV	0.1211	1.04869e4	1209.80066	1.6227
21	13.230	VV	0.1183	1.08566e4	1214.35046	1.6799
22	13.301	VV	0.0634	5551.98584	1213.16223	0.8591
23	13.487	VV	0.1411	1.32582e4	1216.97058	2.0515
24	13.557	VV	0.0545	4641.10303	1215.71472	0.7182
25	13.614	VV	0.0397	3508.79321	1214.10608	0.5429
26	13.675	VV	0.0445	3805.15869	1214.95569	0.5888
27	13.794	VV	0.1224	1.22010e4	1223.23389	1.8879
28	13.881	VV	0.0760	7537.92676	1221.94092	1.1664
29	14.059	VV	0.0937	9211.46094	1225.64026	1.4254

Sample Name: dys47 12.8 mgml 55 microl

Peak #	RetTime [min]	Type	Width [min]	Area [mAU*s]	Height [mAU]	Area %
30	14.169	VV	0.1089	1.08440e4	1229.20068	1.6780
31	14.274	VV	0.0599	5259.76758	1229.07568	0.8139
32	14.432	VV	0.1729	1.72021e4	1232.07239	2.6618
33	14.645	VV	0.1212	1.09376e4	1236.42151	1.6925
34	14.763	VV	0.1102	1.04027e4	1235.70081	1.6097
35	14.887	VV	0.0622	5748.21631	1236.26978	0.8895
36	14.953	VV	0.0493	4389.86475	1239.84338	0.6793
37	14.982	VV	0.0565	4203.77100	1240.20337	0.6505
38	15.066	VV	0.1011	9261.88574	1241.07837	1.4332
39	15.187	VV	0.0542	4695.74902	1239.44946	0.7266
40	15.219	VV	0.0911	6772.74854	1238.94666	1.0480
41	15.453	VV	0.1421	1.44813e4	1241.02893	2.2408
42	15.519	VV	0.0708	6035.83789	1239.97571	0.9340
43	15.685	VV	0.1075	1.07777e4	1239.19202	1.6677
44	15.750	VV	0.0645	5998.95166	1238.96643	0.9283
45	15.812	VV	0.0264	1959.72302	1236.75110	0.3032
46	15.844	VV	1.3573	1.42598e5	1236.67529	22.0653
47	19.191	VV	0.6502	2.53886e4	548.29333	3.9286
48	19.813	VV	1.0163	3.31179e4	409.17752	5.1246
49	22.365	VBA	1.9148	2.29565e4	140.75606	3.5522

Totals : 6.46255e5 5.73075e4

Signal 2: DAD1 B, Sig=260,4 Ref=636,4

Peak #	RetTime [min]	Type	Width [min]	Area [mAU*s]	Height [mAU]	Area %
1	11.480	BB	1.7465	1.56424e5	1163.46838	99.3727
2	20.305	BB	0.8396	987.43414	16.32625	0.6273

Totals : 1.57412e5 1179.79464

Signal 3: DAD1 C, Sig=280,4 Ref=636,4

Peak #	RetTime [min]	Type	Width [min]	Area [mAU*s]	Height [mAU]	Area %
1	11.490	BB	1.8036	2.87668e5	2077.27344	99.3407
2	20.280	BB	1.0404	1909.10071	24.14576	0.6593

Totals : 2.89577e5 2101.41920

*** End of Report ***